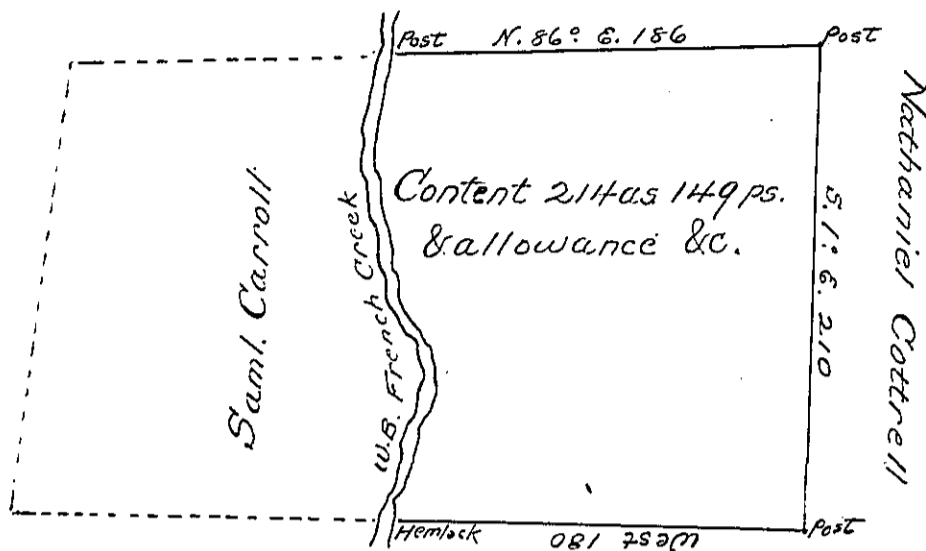


Courses up Stream

- 1st N. 15° E. 66
- 2d. N. 09° W. 114
- 3d. N. 70° W. 12
- 4th N. 14° W. 72
- 5th N. 06° E 46

10th Donation District



John Eagleson

A draught of a part of a tract of Land situated in Waterford Township Erie County in the Waters of French creek on the east side of said creek Surveyed September 4th. 1827 for David Middleton by virtue of her Warrant dated March 14th A.D. 1827 and containing 214 acres 149 perches and allowance &c.

Wilson King D.S.

I certify that at the time of Surveying the above land the above named David Middleton was actually residing on the same with his family and engaged in improving the same and from the Books or documents in my Office the above land has never been appropriated or Surveyed to any person other than the said David Middleton by Warrant or otherwise

Wilson King D.S.

IN TESTIMONY that the above is a copy of the original remaining on file in the Department of Internal Affairs of Pennsylvania, made conformably to an Act of Assembly approved the 16th day of February, 1833, I have hereunto set my Hand and caused the Seal of said Department to be affixed at Harrisburg, this second day of September 1902

James W. Latta
Secretary of Internal Affairs.